



# BEST WESTERN PRODUCT GUIDE 2018



[www.westpointhospitality.com](http://www.westpointhospitality.com)



# How To Order:

All products are available through your local hospitality distributor.

If you would like information on finding a distributor in your area, please contact WestPoint Hospitality at (877) 699-0406.

**martex**

  
GRAND  
PATRICIAN

 EcoPure™  
EARTH FRIENDLY AND SUSTAINABLE

  
*Five Star Hotel*  
COLLECTION

# Table of Contents

<b>POOL TOWELS</b>	<b>4</b>
<b>MATTRESS PADS</b>	<b>5</b>
<b>BLANKETS/DUVET INSERTS</b>	<b>8</b>
<b>BLANKETS</b>	<b>9</b>
<b>TOP OF BED ACCESSORIES</b>	<b>11</b>

# POOL TOWELS



## Martex® Cabana Collection Pool Towels

### DETAILS:

- 100% Ring Spun, Cotton Loops
- Made with Intelliweave™ to provide dimensional stability, durability, and fast-drying properties
- Staybright® bleach-friendly and fade-resistant technology



Martex® Cabana Collection	Size	Weight (lb/dz)	SKU
TA027 DARK LINEN	30 x 66"	13	7105824
TA027 DEEP SEA	30 x 66"	13	7105825
TA027 WHITE	30 x 66"	13	7105826
TA037 Deep Sea/White Stripe	30 x 66"	13	7106294
TA037 Dark Linen/White Stripe	30 x 66"	13	7106293



## Martex® Pool Towels

### Features:

- 100% Ring Spun, Cotton Loops
- Made with Intelliweave™ to provide dimensional stability, durability, and fast-drying properties
- Double Dobby Border is made with Staybright® Technology



Martex®	Size	Weight (lb/dz)	SKU
TA04 Morning Glory Stripe w/Staybright®	24 x 50"	10.5	7109426
T3800 Pale Jade	24 x 48"	8	7089396

# MATTRESS PADS



## EcoPure™ Mattress Pad

### DETAILS:

- 240 Thread Count
- 100% Cotton Cover
- Filled with 6oz 100% Recycled Fiber
- Quilted 6" Channel Pattern
- Smooth Flex Skirt fits up to a 20" mattress depth
- Easy Care, Machine Wash and Dry

EcoPure™	Size	SKU
Twin	39 x 75"	5010535
Twin XL	39 x 80"	5007627
Full	54 x 75"	5007626
Queen	60 x 80"	5007629
King	78 x 80"	5007630
Cal. King	72 x 84"	5007628



## Martex® Brentwood II Mattress Topper

### DETAILS:

- 200 Thread Count, 60% Cotton/ 40% Polyester Fabric
- EcoPure™ Polyester 20oz fiberfill
- Quilted Channel Pattern minimizes Fiberfill Migration
- 2" Anchor Bands on all four corners
- GSA Compliant

Martex® Basics (Fitted)	Size	Deluxe Woven 15"	Deluxe Woven 12"	Choice Woven
Twin	39 x 75"	5012511	5012690	
Twin Long	39 x 80"	5012996		5012539
Full	54 x 75"	5012512	5012693	
Full Long	54 x 80"			5012540
Queen	60 x 80"	5012513	5012691	5012541
King	78 x 80"	5012514	5012692	5012542

# MATTRESS PADS



## Martex® Basics Fitted Mattress Pads

Features:

- Woven blended fabric on face and back
- 130 Thread Count, 70% Polyester/ 30% Cotton Fabric
- EcoPure™ Polyester fiberfill available in 5oz and 3oz weights (4oz for Choice Woven)
- All around fitted skirt (15" fits up to 18" mattress, 12" fits up to 14" mattress)
- Ogee Quilt Pattern prevents Fiberfill Migration
- GSA Compliant

Martex® Basics (Fitted)	Size	Deluxe Woven 15"	Deluxe Woven 12"	Choice Woven
Twin	39 x 75"	5012511	5012690	
Twin Long	39 x 80"	5012996		5012539
Full	54 x 75"	5012512	5012693	
Full Long	54 x 80"			5012540
Queen	60 x 80"	5012513	5012691	5012541
King	78 x 80"	5012514	5012692	5012542



## Martex® Basics Anchor Band Mattress Pads

Features:

- Non-Woven polyester fabric on face and back
- EcoPure™ Polyester 3oz fiberfill
- Quilted Channel Pattern minimizes Fiberfill Migration
- 1" Anchor Bands on all four corners can fit 8"-12" mattresses
- GSA Compliant

Martex® Basics (Anchor Band)	Size	Choice Woven	Essential Non-Woven
Twin	39 x 75"		
Twin Long	39 x 80"	5012535	5012531
Full	54 x 75"		
Full Long	54 x 80"	5012536	5012532
Queen	60 x 80"	5012537	5012533
King	78 x 80"	5012538	5012534



# MATTRESS PADS



## Silent Choice® Waterproof Mattress Pad

Features:

- Polyester Brushed Microfiber top for comfort
- Filled with 5.5oz Polyester fiberfill
- Soft and silent fabricated urethane moisture barrier
- Smooth Flex Skirt fits up to a 14" Mattress Depth

Silent Choice® Waterproof	Size	SKU
Twin	39 x 75"	5009088
Full	54 x 75"	5009089
Queen	60 x 80"	5009090
King	78 x 80"	5009091



## Tough One® Fiber Mattress Pad

Features:

- 100% Polyester
- 9.6oz weight per sq. yd
- Strong & Durable Woven Fiber
- Stitched around construction
- Colored Hem Threads
- Available in flat, fitted, and anchor band
- GSA Compliant

Tough One® Fiber	Size	Flat	Fitted	Anchor Band
Twin	39 x 75"	C116801	C115801	C116301
Twin Long	39 x 80"	C119101	C175001	C175601
Twin XXL	36 x 84"		C119701	
Full	54 x 75"	C116901	C115901	C116401
Full Long	54 x 80"	C170201	C119501	C119401
Queen	60 x 80"	C118601	C116001	C116501
King	78 X 80"	C118701	C116101	C116601

# BLANKETS/DUVET INSERTS



## Martex® Basics Quilted Blanket

Features:

- 130 Thread Count Fabric
- 70% Polyester/30% Cotton
- EcoPure™ Polyester Fiberfill
- 6" Box Stitch with 1" Hem
- Easy Care, Machine Wash and Dry
- GSA Compliant

Martex® Basics Down Alternative	Size	Weight (oz)	SKU
Twin	68 x 94"	16	1B05910
Full	84 x 94"	20	1B05909
Queen	92 x 94"	22	1B05907
King	106 x 94"	25	1B05908



## EcoPure™ Quilted Blanket



Features:

- 240 Thread Count Fabric
- 100% Cotton Shell with EcoPure™ Fill
- 6" Sewn-Through Box Construction
- Filled with 100% Recycled Fiber
- Easy Care, Machine Wash and Dry
- Colored Hem Threads Indicate Size

EcoPure™	Size	Weight (oz)	SKU
Twin	66 x 90"	14	5007633
Full/Queen	90 x 90"	18	5007631
King	108 x 90"	23	5007632



# BLANKETS



## Martex® Super Fleece Blanket

Features:

- Soft & Lofty Fleece Blanket
- 100% Polyester
- Single layer, 190gsm brushed fleece with anti-pill finish
- Self-hemmed with triple needle cover stitch four sides
- Colors: Ivory and Tan

Martex® Super Fleece	Size	Weight (oz)	Ivory	Tan
Twin	66 x 90"	1.7	1B06138	1B06139
Full	80 x 90"	2	1B06144	1B06145
Queen	90 x 90"	2.2	1B06142	1B06143
King	108 x 90"	2.7	1B06140	1B06141



## Martex® Plush Blanket

Features:

- Soft & Lofty Plush Blanket
- 100% Microfiber polyester fibers for softness
- Single layer, 280gsm raschel knitted construction
- Self-hemmed on all four sides
- Colors: Ivory and Khaki

Martex® Plush	Size	Weight (oz)	Ivory	Khaki
Twin	66 x 90"	2.3	1B06279	1B06280
Full	80 x 90"	2.9	1B06097	1B06098
Queen	90 x 90"	3.2	1B06095	1B06096
King	108 x 90"	4.1	1B06093	1B06094

# BLANKETS



## Martex® Sovereign Cotton Blanket

Features:

- 100% Cotton Blanket
- Soft and breathable for year round comfort
- Distinctive Diagonal Weave
- Available in White and Natural

Martex® Sovereign	Size	Weight	White	Natural
Twin	66 x 90"	2.7	1B06159	1B06158
Full	80 x 90"	3.2	1B06161	1B06160
Queen	90 x 90"	3.6	1B06163	1B06162
King	108 x 90"	4.4	1B06157	1B06156



## Grand Patrician® Cotton Blanket

Features:

- 100% Cotton Blanket
- Soft and breathable for year round comfort
- Loom Woven Herringbone Weave
- Available in White and Natural

Grand Patrician®	Size	Weight (oz)	White	Natural
Twin	66 x 90"	2.8	1B06151	1B06148
Full	80 x 90"	3.3	1B06152	1B06146
Queen	90 x 90"	3.8	1B06153	1B06149
King	108 x 90"	4.5	1B06150	1B06147

# TOP OF BED ACCESSORIES



## Martex® Suites Bedding Accessories

Features:

- 200 thread count dobby in a durable blend of 70% polyester and 30% cotton provides lasting comfort
- Elegant, Swiss Dot dobby pattern w/ Staybright® bleach-friendly, fade-resistant technology
- GSA Compliant

Martex® Suites	Size		White	Silver Mink
	Bedscarf	Queen Bedscarf	74 x 24"	1C88176
King Bedscarf		92 x 24"	1C88177	1C88839
Bedskirt	Queen Bedskirt	60 x 80 x 15"	1C97434	1C93756
	King Bedskirt	78 x 80 x 15"	1C97425	1C93747
Shams	Standard Sham	20 x 26"	1C97419	1C97421
	Queen Sham	20 x 30"	1C05354	1C05356
	King Sham	20 x 36"	1C88171	1C88818
	Euro Sham	26 x 26"	1C97416	1C88814

# TOP OF BED ACCESSORIES



## Martex® T250 Millennium Duvets and Decorative Top Sheets

Features:

- 250 Thread Count sheet made with a Cotton Rich Blend
- 60% Cotton/ 40% Polyester
- Balanced, percale weave construction for lasting durability
- Duvets are constructed with hand guides for easy bedmaking
- Self-piping on three sides
- Lock-stitched hems to prevent unraveling and fraying
- Available in Solid and Stripe
- GSA Compliant

Martex® T250 Millennium	Size		Solid	Stripe
Duvet Cover	Twin Duvet Cover	70 x 94"	1C13448	1C13456
	Full Duvet Cover	86 x 94"	1C13449	1C13457
	Queen Duvet Cover	94 x 94"	1C13450	1C13458
	King Duvet Cover	108 x 94"	1C13447	1C13455
Flat Top Sheet	Top Sheet	66 x 109"		1A87845
	Top Sheet	84 x 109"		1A86494
	Top Sheet	84 x 119"		1A86495
	Top Sheet	92 x 109"		1A86500
	Top Sheet	92 x 119"		1A86501
	Top Sheet	110 x 109"		1A86891
	Top Sheet	110 x 119"		1A87319
	Top Sheet	98 x 114"		1A88328
	Top Sheet	118 x 114"		1A88331

# TOP OF BED ACCESSORIES



## Martex® Wovens Decorative Bedding

Features:

- 100% Polyester Fabric
- Heavyweight design-textured jacquard and matelasse fabrics are durable and have excellent pill-resistance
- Color coded labels to assist with size identification
- Available in Solid White with four different textures: Cityscape, Wavy Jac, and Basketweave



Wavy Jac



Basketweave

Martex® Wovens	Size		Wavy Jac	Basketweave
Top Sheet	Full Top Sheet	90 x 115"	1A34051	1A34058
	Queen Top Sheet	96 x 115"	1A34053	1A34060
	King Top Sheet	114 x 115"	1A34052	1A34059
Shams	Queen Sham	20 x 30"	1C03919	1C03939
	King Sham	20 x 36"	1C03920	1C03940
Decorative Pillows	Square Pillow Cover w/ Insert	18 x 18"	1C03924	1C03944
	Square Pillow Cover w/ Insert	12 x 24"	1C03923	1C03943

# TOP OF BED ACCESSORIES



## Martex®Rx Custom Design Bedding

Features:

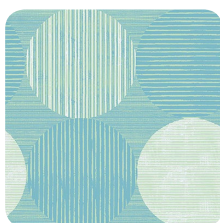
- 70% Polyester, 30% Cotton
- Customize your Bed Component with 19 different fabric choices available in an assortment of fashion prints and solid colors
- Shams, bedskirts, bedscarves, boxspring wraps, decorative pillows
- GSA Compliant



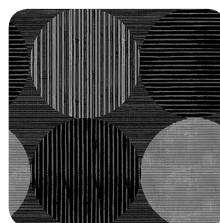
Bennet Green



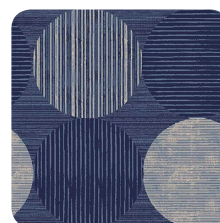
Bennet Tan



Circles & Stripes  
Aqua



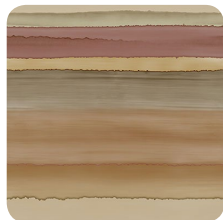
Circles & Stripes  
Black/Gray



Circles & Stripes  
Sapphire



Finley Blue



Finley Terra Cotta



Madeline Berry/Silver  
(Dropped End of Year)



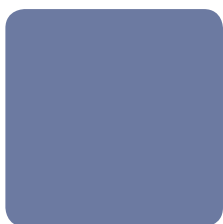
Madeline Gold  
(Dropped End of Year)



Oxidized Leaf Tan



Shells & Stripes Blue



Blue



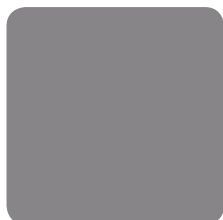
Gold



Green



Navy Blue



Silver



Tan



Chocolate



# TOP OF BED ACCESSORIES

## Martex®Rx Product Components and Sizes

Martex®Rx		
Product	Size	
BEDSKIRTS	Twin XL Bedskirt	39 x 80 x 15"
	Full XL Bedskirt	54 x 80 x 15"
	Queen Bedskirt	60 x 80 x 15"
	King Bedskirt	78 x 80 x 15"
BOX SPRING WRAPS	Twin XL Bedskirt	FITS 39 x 80"
	Full XL Bedskirt	FITS 54 x 80"
	Queen	FITS 60 x 80"
	King	FITS 78 x 80"
SHAMS	Standard Sham	20 x 26"
	Queen Sham	20 x 30"
	King Sham	20 x 36"
BEDSCARF	Full/Queen Bedscarf	74 x 24"
	King Bedscarf	92 x 24"
DECORATIVE PILLOWS	Square Pillow Cover w/ Insert	18 x 18"
	Breakfast Pillow Cover w/ Insert	12 x 24"

***Scan the QR code to start custom designing your bed online!***



**martex®Rx**



SOLUTIONS FOR A BETTER GUEST EXPERIENCE